

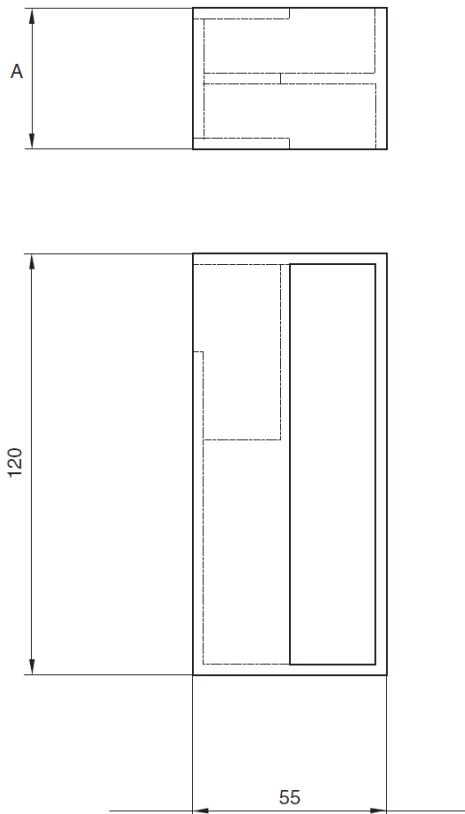
GDSI-4251 Stainless Steel Sliding Door Handle

Features

- Contemporary handle design that can be accessed from door front, back, or edge
- Requires adhesive for installation (such as 2-part epoxy, not supplied)

Material

- Stainless steel 304, satin finish



Part No.	A
GDSI-4251-35	35
GDSI-4251-38	38
GDSI-4251-40	40
GDSI-4251-43	43
GDSI-4251-45	44.5
GDSI-4251-50	50